

Name: KEY Date: \_\_\_\_\_ Block: \_\_\_\_\_ Warm-Up #2

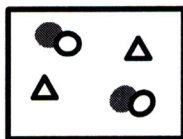
1. Identify each as either a substance or mixture. If a substance, determine the type.

Key: ● = carbon

○ = oxygen

△ = nitrogen

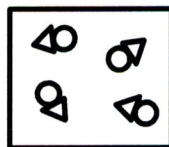
Flask 1



Mixture

Different types of particles (substances)

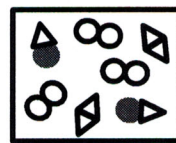
Flask 2



Substance - compound

one type of particle (all the same) (each is CO)  
compound = substance made of 2 or more different types of atoms bonded

Flask 3



Mixture

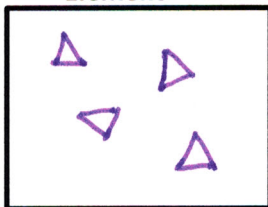
Different types of particles

2. The contents of Flask 1 were combined with that of Flask 2. Flask 3 represents the result of this combination. Is this change physical or chemical? Explain your reasoning.

Chemical change because chemical bonds were broken and new bonds were made to make new substances.

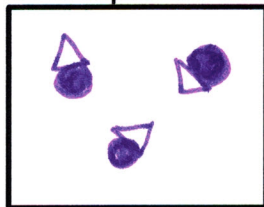
3. Using question 1 as a guide/example, draw an element, a compound, and a mixture.

Element



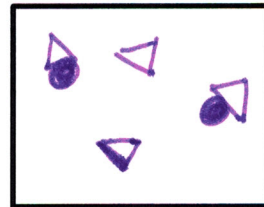
one type of atom

Compound



each particle composed of same thing: different types of atoms bonded

Mixture



Different types of particles

4. Write the name & symbol for the element located in group 17 and period 2? What is the name of this family to which this element belongs?

F - Fluorine

Group 17 = Halogens